

Artecy

CROSS STITCH

French Bulldog



* Original image© Ilona Krijgsman - Pixabay.
Cross Stitch Design by Tereena Clarke.

Completed Size = 243w x 223h Stitches

14 Count, 17.5w x 16h inches (44cm x 41cm)

16 Count, 15.5w x 14h inches (39cm x 36cm)

18 Count, 13.5w x 12.5h inches (34cm x 32cm)

Uses 38 DMC cotton colours. Only full cross stitches are used in this pattern.

Copyright of Artecy Cross Stitch

www.artecy.com

www.artecyshop.com

Pattern Instructions

* This pattern can be worked on any fabric type, colour or count you prefer. To work out the size of the finished article, take the number of stitches wide and high and divide it by the count of your fabric (e.g. 14,16,18 count aida etc) to get the size in inches. Times it by 2.54 to get centimetres. We have the sizes in inches shown on the previous page. Also leave at least a few inches of fabric around each side of the design to assist in framing. The higher the fabric count the smaller the completed project will be.

* To put the pattern together look in the top and bottom corners. The page numbers in brackets show which page number it joins up to. Page 1 always starts at the top left hand side of the pattern. Our pages also have a shaded grey section. This indicates a 3 row overlap from adjoining pages to assist with reading the pattern. PLEASE DO NOT RESTITCH THIS AREA.

* You should begin at the centre of the pattern. To find the centre of the pattern it is just a matter of laying the pattern out and locating the arrows at the top and left hand side of the patterns, they are determined by dividing the stitch numbers wide and high in half. Where the two points meet in the middle, that is the centre.

* If you need more assistance to find the middle of your pattern or the page layout, please see the notes section on the colour symbol chart. The easiest way to stitch this pattern, as it has multiple pages, is to stitch one page at a time.

* We suggest using two strands of floss for each stitch and one strand for backstitching if the pattern calls for it.

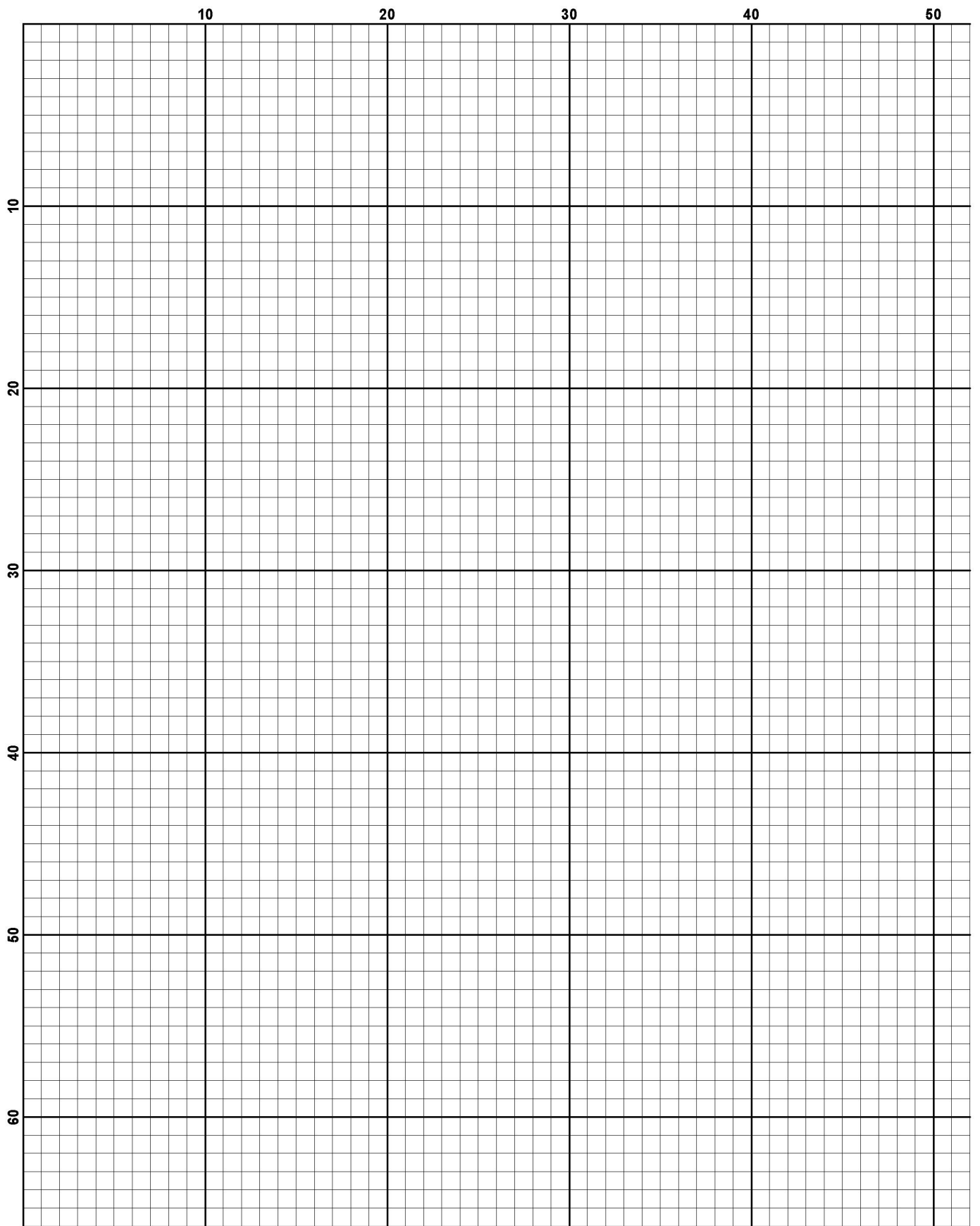
We hope you enjoy stitching our pattern.

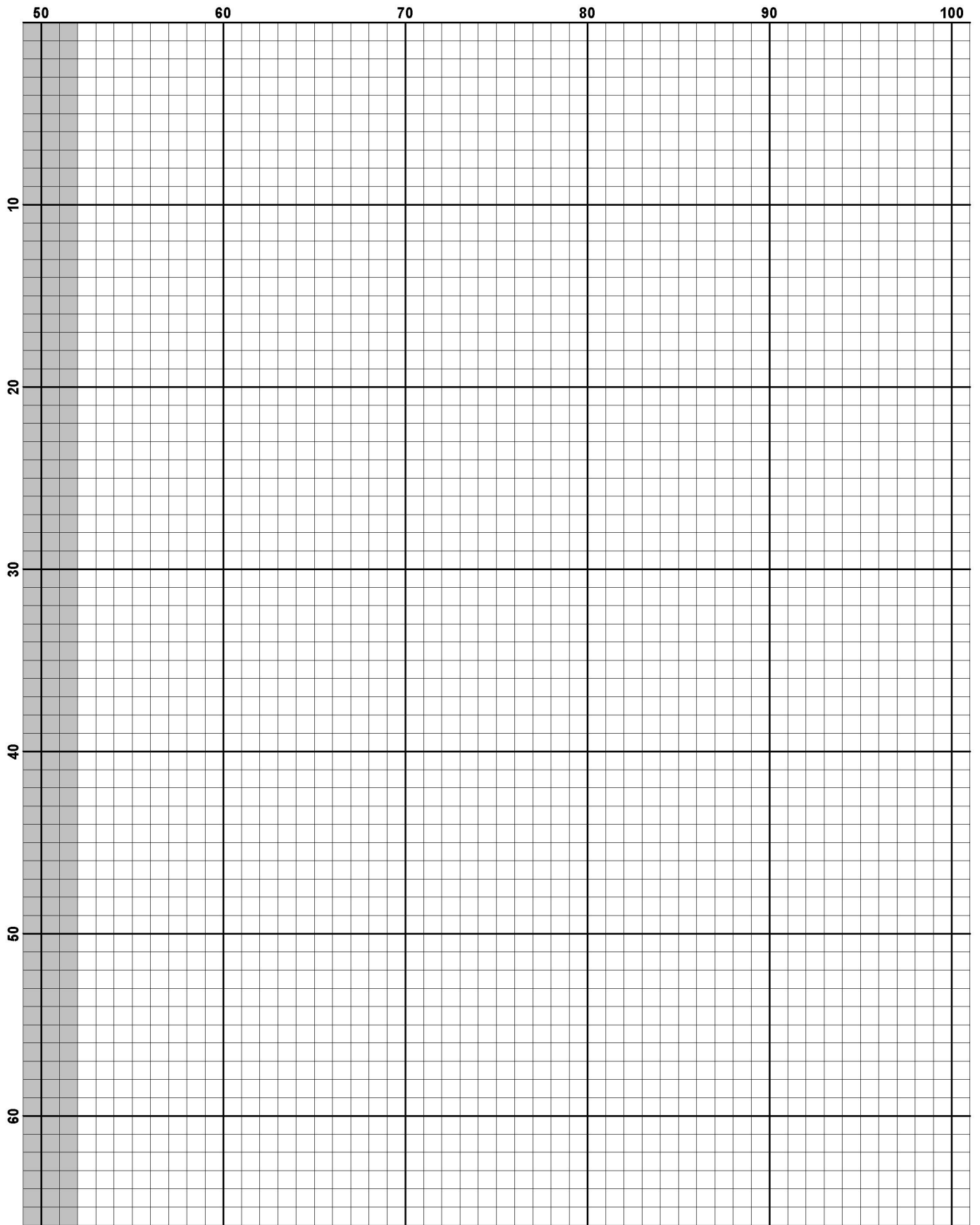
Thanks and Best Wishes
Tereena Clarke

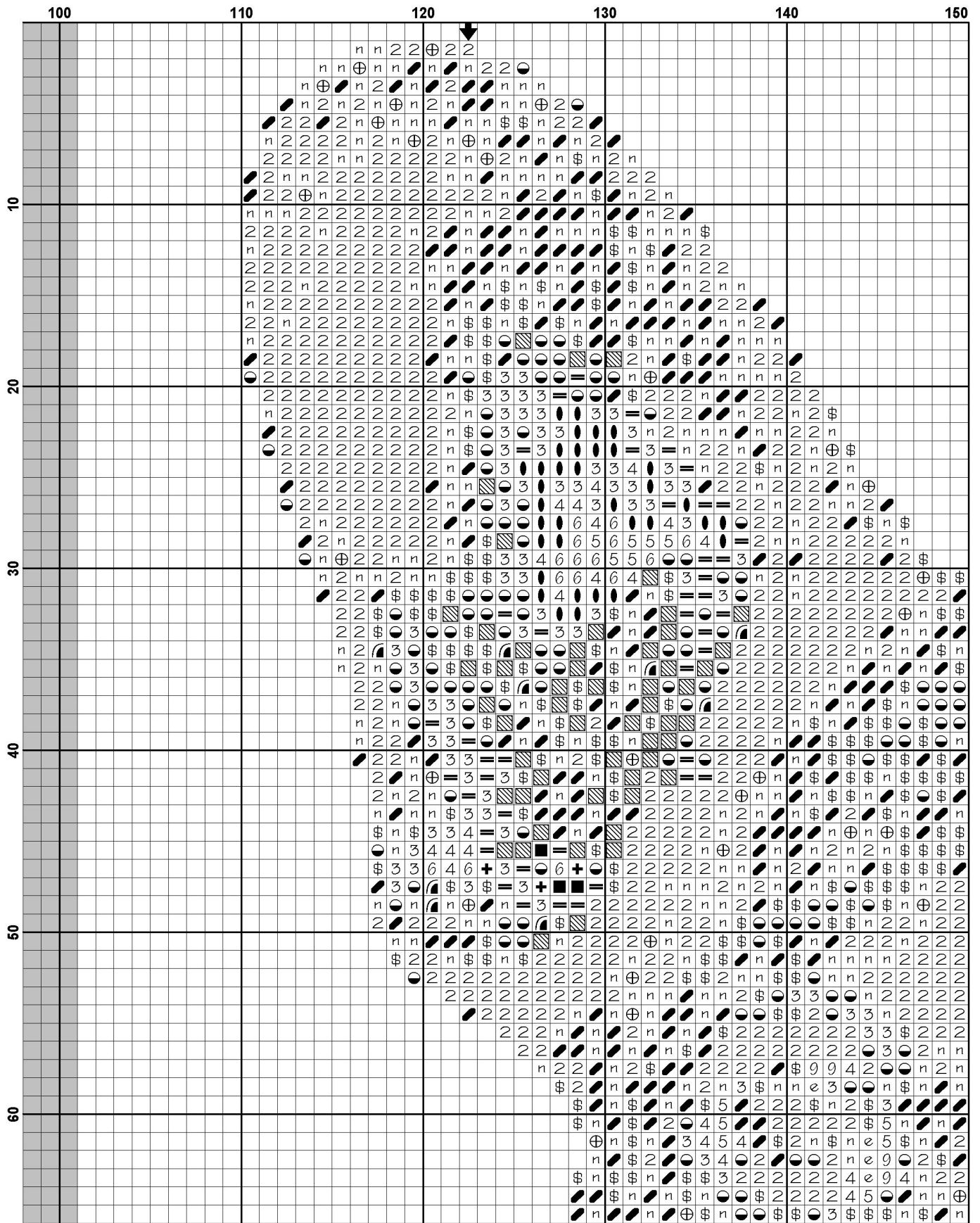
Artecy Cross Stitch
Po Box 3474
Tuggerah, NSW 2259
Australia

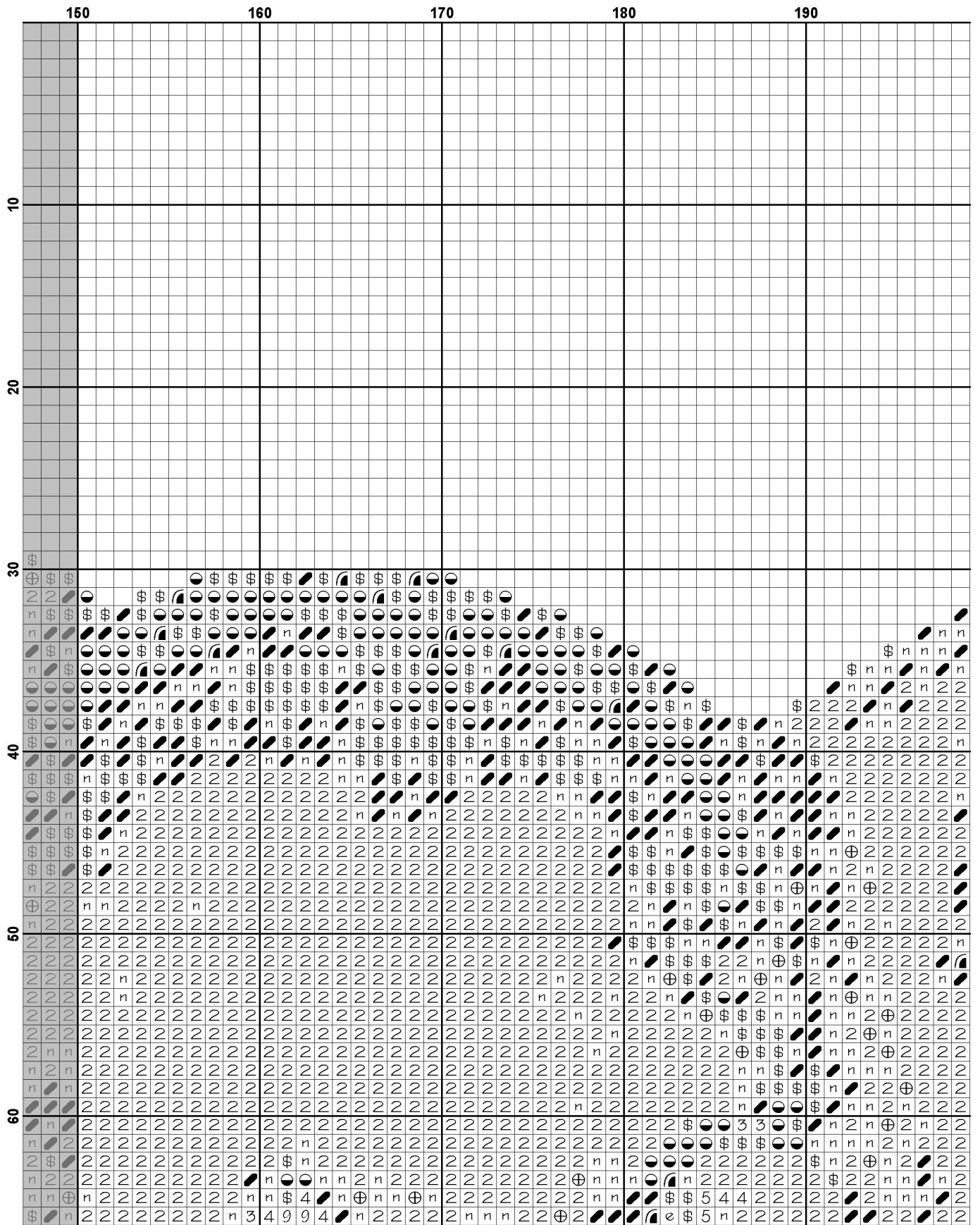
Websites: www.artecy.com and www.artecyshop.com
Email: artecy@artecy.com or stitch@artecyshop.com

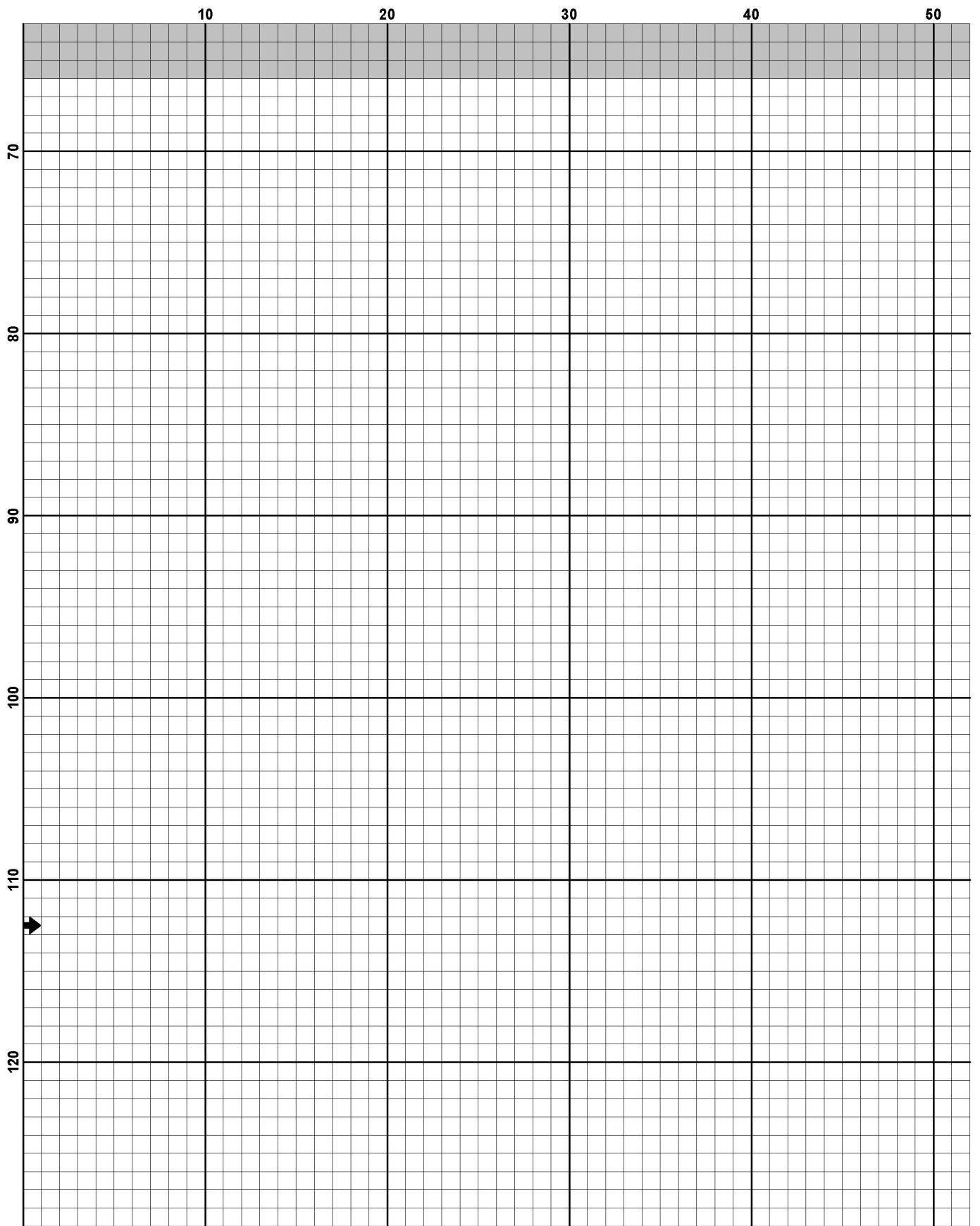
*Patterns are strictly for personal use only. It is against our copyright to make kits for sale from our designs or to sell, copy or redistribute this pattern in any form. You may not upload our patterns to any internet forums or groups or any other website. You may make 1 copy of this pattern for a working copy for your own personal use if needed.

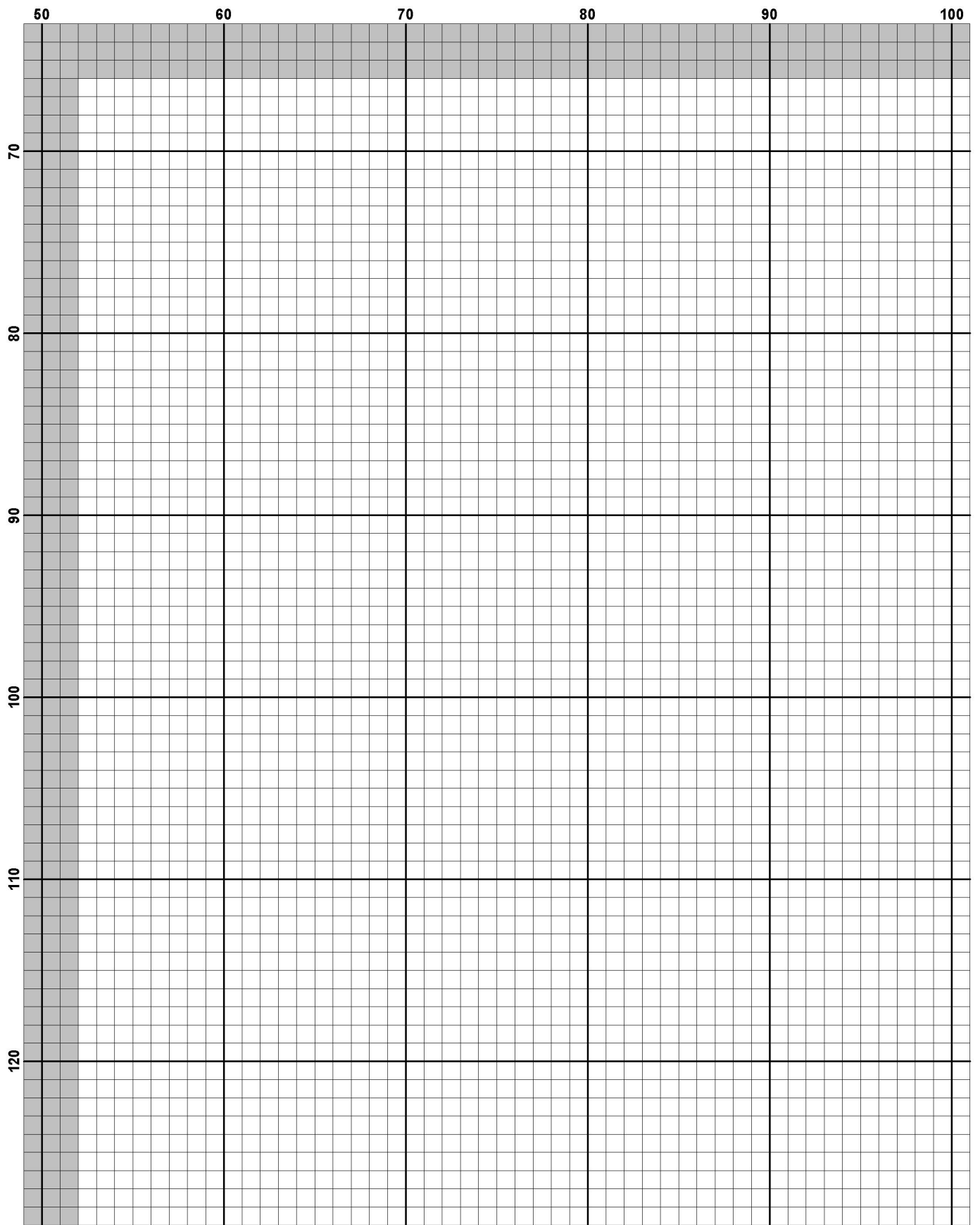


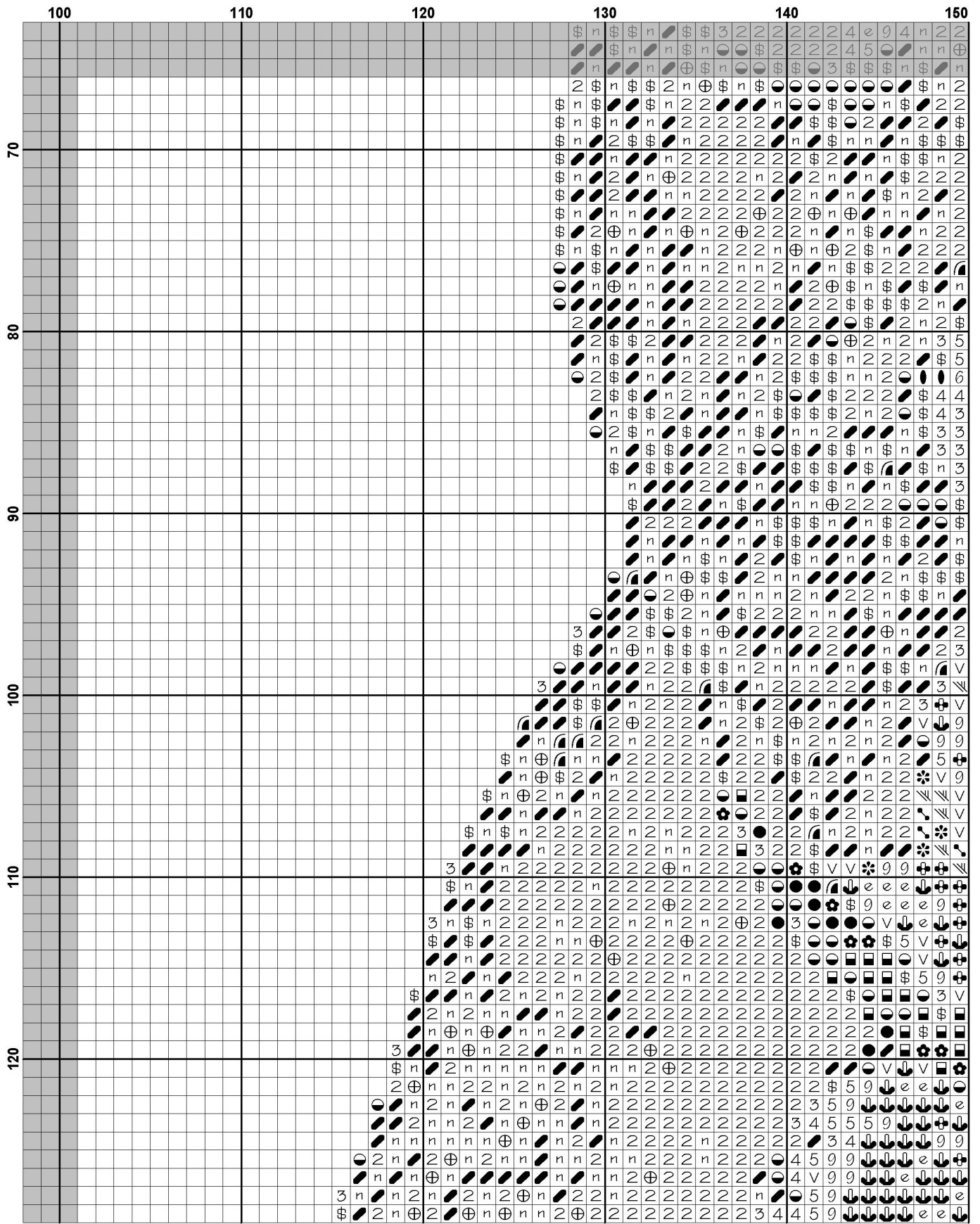


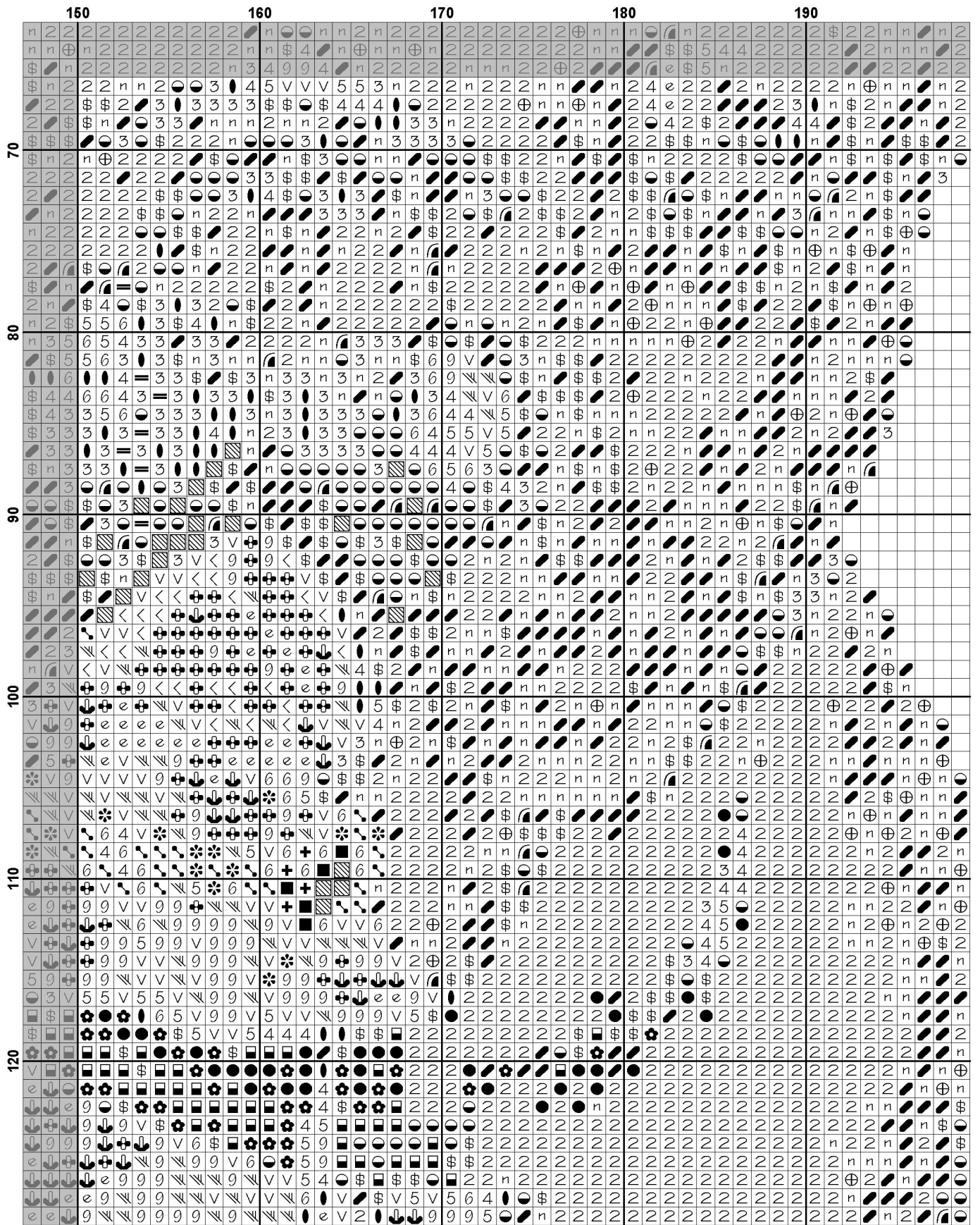


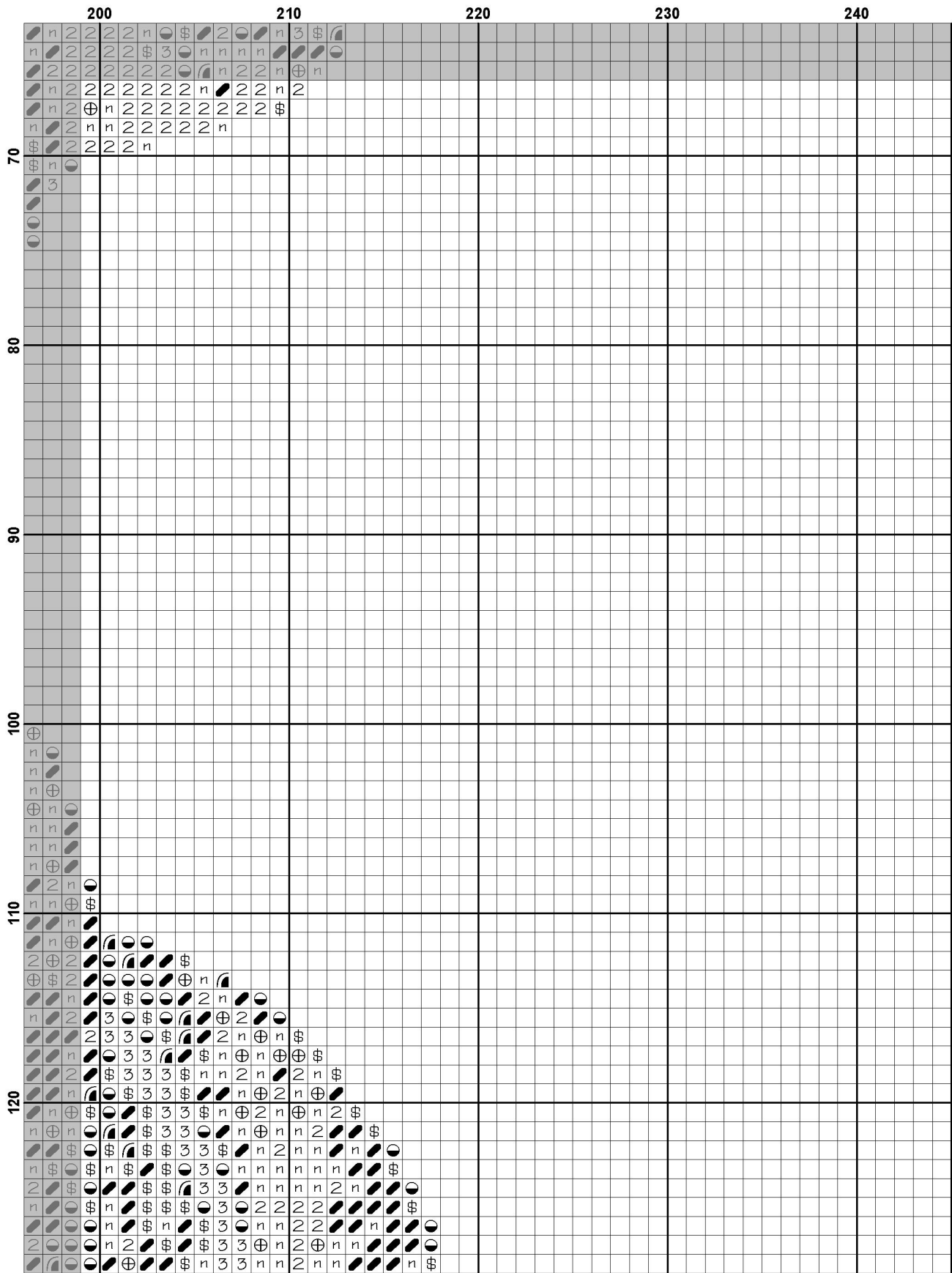


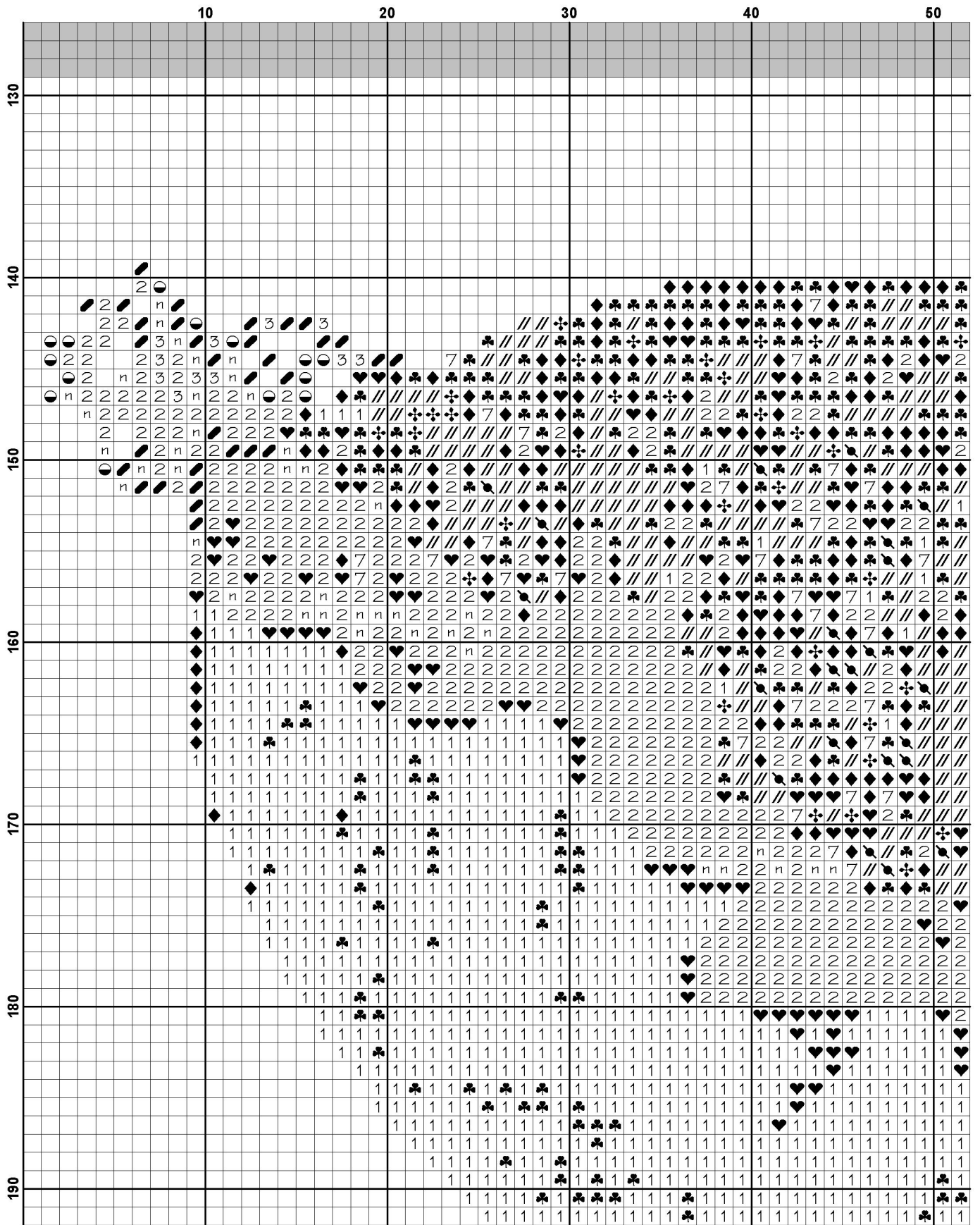


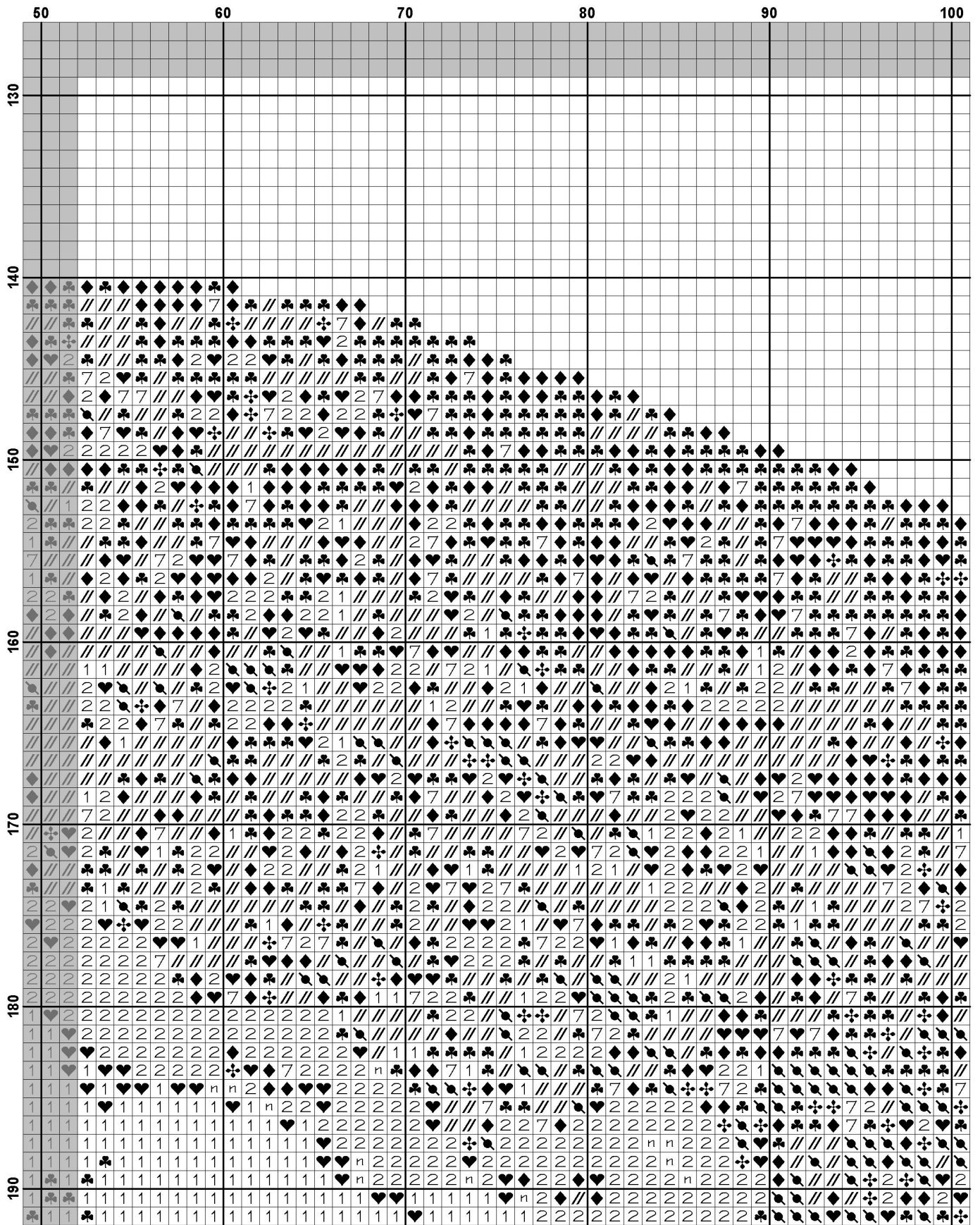


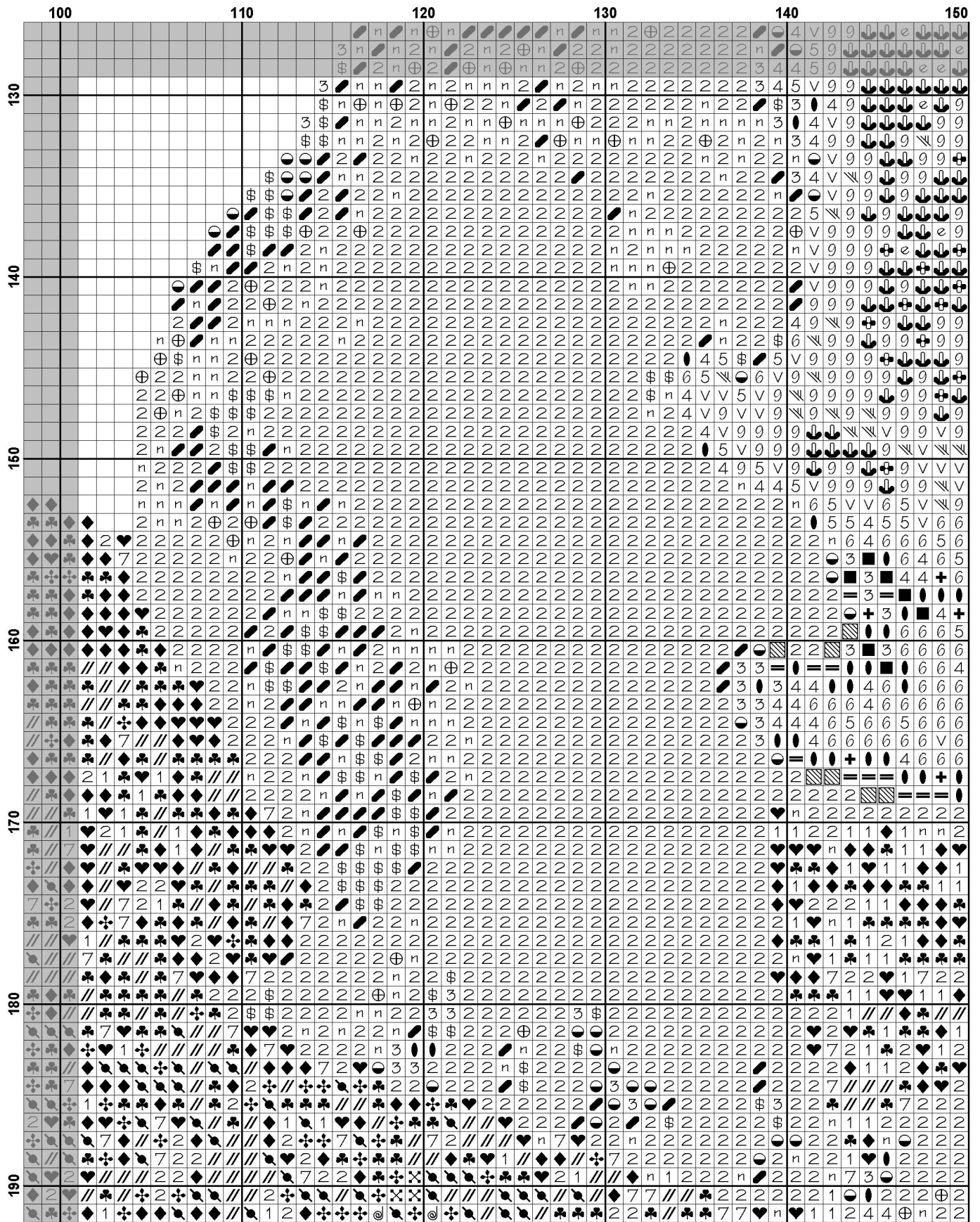




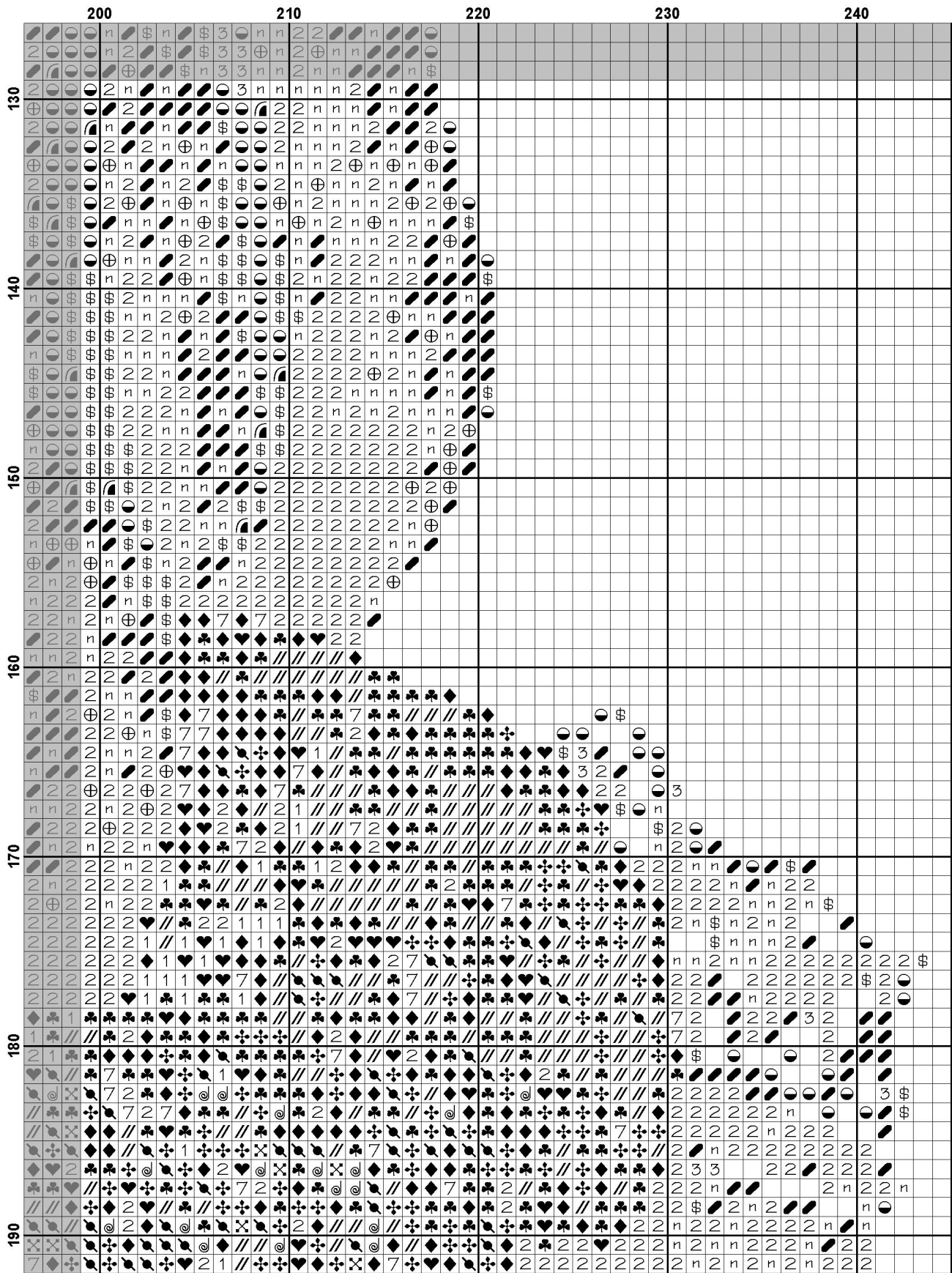


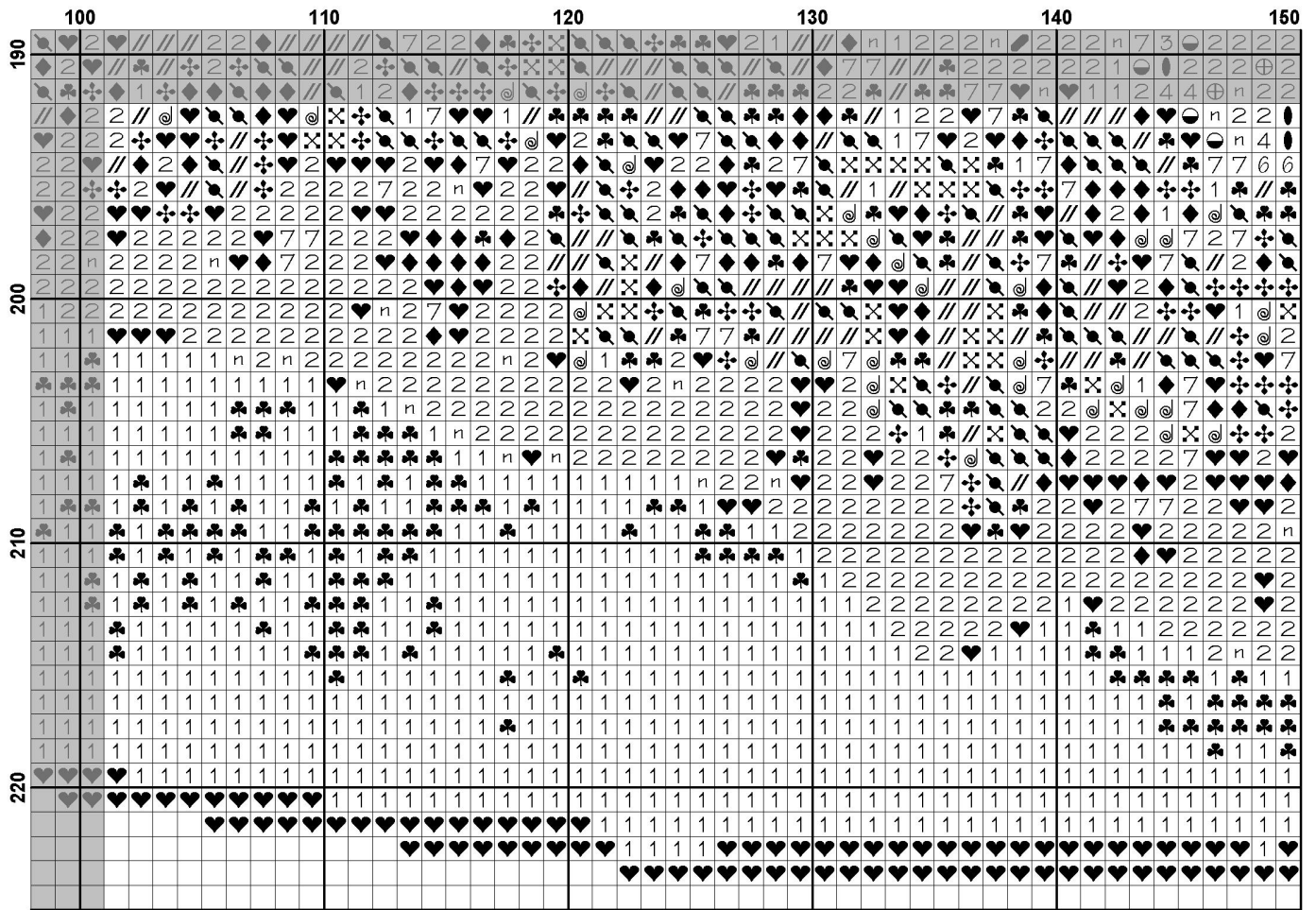












Pattern Name: French Bulldog
Designed By: Image by Ilona Krijgsman - Pixabay
Company: Artecy Cross Stitch
Copyright: Copyright Artecy Cross Stitch. All rights Reserved.
Fabric: Aida 14, White
 243w X 223h Stitches
Size(s): 14 Count, 17-1/4w X 15-7/8h in
 16 Count, 15-1/8w X 13-7/8h in
 18 Count, 13-1/2w X 12-3/8h in

Floss Used for Full Stitches:

Symbol	Strands	Type	Number	Color
	2	DMC	158	Cornflower Blue-MD VY DK
	2	DMC	169	Pewter-LT
	2	DMC	310	Black
	2	DMC	317	Pewter Gray
	4	DMC	318	Steel Gray-LT
	2	DMC	321	Christmas Red
	2	DMC	336	Navy Blue
	2	DMC	413	Pewter Gray-DK
	3	DMC	414	Steel Gray-DK
	5	DMC	415	Pearl Gray
	2	DMC	451	Shell Gray-DK
	2	DMC	452	Shell Gray-MD
	2	DMC	453	Shell Gray-LT
	7	DMC	498	Christmas Red-DK
	2	DMC	535	Ash Gray-VY LT
	2	DMC	606	Bright Orange-Red
	2	DMC	608	Bright Orange
	2	DMC	666	Christmas Red-BRT
	9	DMC	762	Pearl Gray-VY LT
	2	DMC	814	Garnet-DK
	1	DMC	817	Coral Red-VY DK
	2	DMC	818	Baby Pink
	2	DMC	819	Baby Pink-LT
	2	DMC	823	Navy Blue-DK
	2	DMC	934	Black Avocado Green
	2	DMC	3041	Antique Violet-MD
	6	DMC	3042	Antique Violet-LT
	2	DMC	3072	Beaver Gray-VY LT
	2	DMC	3340	Apricot-MD
	2	DMC	3371	Black Brown
	2	DMC	3705	Melon-DK
	2	DMC	3740	Antique Violet-DK
	2	DMC	3743	Antique Violet-VY LT
	2	DMC	3756	Baby Blue-UL VY LT
	2	DMC	3799	Pewter Gray-VY DK
	2	DMC	3801	Christmas Red-LT
	2	DMC	3861	Cocoa-LT
	2	DMC	3865	Winter White

Notes:

The middle of this pattern can be found on page 8 and is 123 stitches across and 113 stitches down.

Pattern layout using page numbers in top left.

1 2 3 4 5
6 7 8 9 10
11 12 13 14 15
16 17 18 19 20

Usage Summary

Strands Per Skein: 6

Skein Length: 313.0 in

Type	Number	Full	Half	Quarter	Petite	Back(in)	Str(in)	Spec(in)	French	Bead	Skein Est.
DMC 158	65	0	0	0	0	0.0	0.0	0.0	0	0	1.000
DMC 169	252	0	0	0	0	0.0	0.0	0.0	0	0	1.000
DMC 310	8220	0	0	0	0	0.0	0.0	0.0	0	0	4.000
DMC 317	833	0	0	0	0	0.0	0.0	0.0	0	0	1.000
DMC 318	192	0	0	0	0	0.0	0.0	0.0	0	0	1.000
DMC 321	1020	0	0	0	0	0.0	0.0	0.0	0	0	1.000
DMC 336	42	0	0	0	0	0.0	0.0	0.0	0	0	1.000
DMC 413	1138	0	0	0	0	0.0	0.0	0.0	0	0	1.000
DMC 414	386	0	0	0	0	0.0	0.0	0.0	0	0	1.000
DMC 415	137	0	0	0	0	0.0	0.0	0.0	0	0	1.000
DMC 451	35	0	0	0	0	0.0	0.0	0.0	0	0	1.000
DMC 452	25	0	0	0	0	0.0	0.0	0.0	0	0	1.000
DMC 453	16	0	0	0	0	0.0	0.0	0.0	0	0	1.000
DMC 498	262	0	0	0	0	0.0	0.0	0.0	0	0	1.000
DMC 535	106	0	0	0	0	0.0	0.0	0.0	0	0	1.000
DMC 606	1159	0	0	0	0	0.0	0.0	0.0	0	0	1.000
DMC 608	416	0	0	0	0	0.0	0.0	0.0	0	0	1.000
DMC 666	1459	0	0	0	0	0.0	0.0	0.0	0	0	1.000
DMC 762	376	0	0	0	0	0.0	0.0	0.0	0	0	1.000
DMC 814	927	0	0	0	0	0.0	0.0	0.0	0	0	1.000
DMC 817	2750	0	0	0	0	0.0	0.0	0.0	0	0	2.000
DMC 818	27	0	0	0	0	0.0	0.0	0.0	0	0	1.000
DMC 819	176	0	0	0	0	0.0	0.0	0.0	0	0	1.000
DMC 823	46	0	0	0	0	0.0	0.0	0.0	0	0	1.000
DMC 934	294	0	0	0	0	0.0	0.0	0.0	0	0	1.000
DMC 3041	101	0	0	0	0	0.0	0.0	0.0	0	0	1.000
DMC 3042	218	0	0	0	0	0.0	0.0	0.0	0	0	1.000
DMC 3072	120	0	0	0	0	0.0	0.0	0.0	0	0	1.000
DMC 3340	117	0	0	0	0	0.0	0.0	0.0	0	0	1.000
DMC 3371	2342	0	0	0	0	0.0	0.0	0.0	0	0	1.000
DMC 3705	129	0	0	0	0	0.0	0.0	0.0	0	0	1.000
DMC 3740	152	0	0	0	0	0.0	0.0	0.0	0	0	1.000
DMC 3743	191	0	0	0	0	0.0	0.0	0.0	0	0	1.000
DMC 3756	354	0	0	0	0	0.0	0.0	0.0	0	0	1.000
DMC 3799	1860	0	0	0	0	0.0	0.0	0.0	0	0	1.000
DMC 3801	374	0	0	0	0	0.0	0.0	0.0	0	0	1.000
DMC 3861	41	0	0	0	0	0.0	0.0	0.0	0	0	1.000
DMC 3865	90	0	0	0	0	0.0	0.0	0.0	0	0	1.000